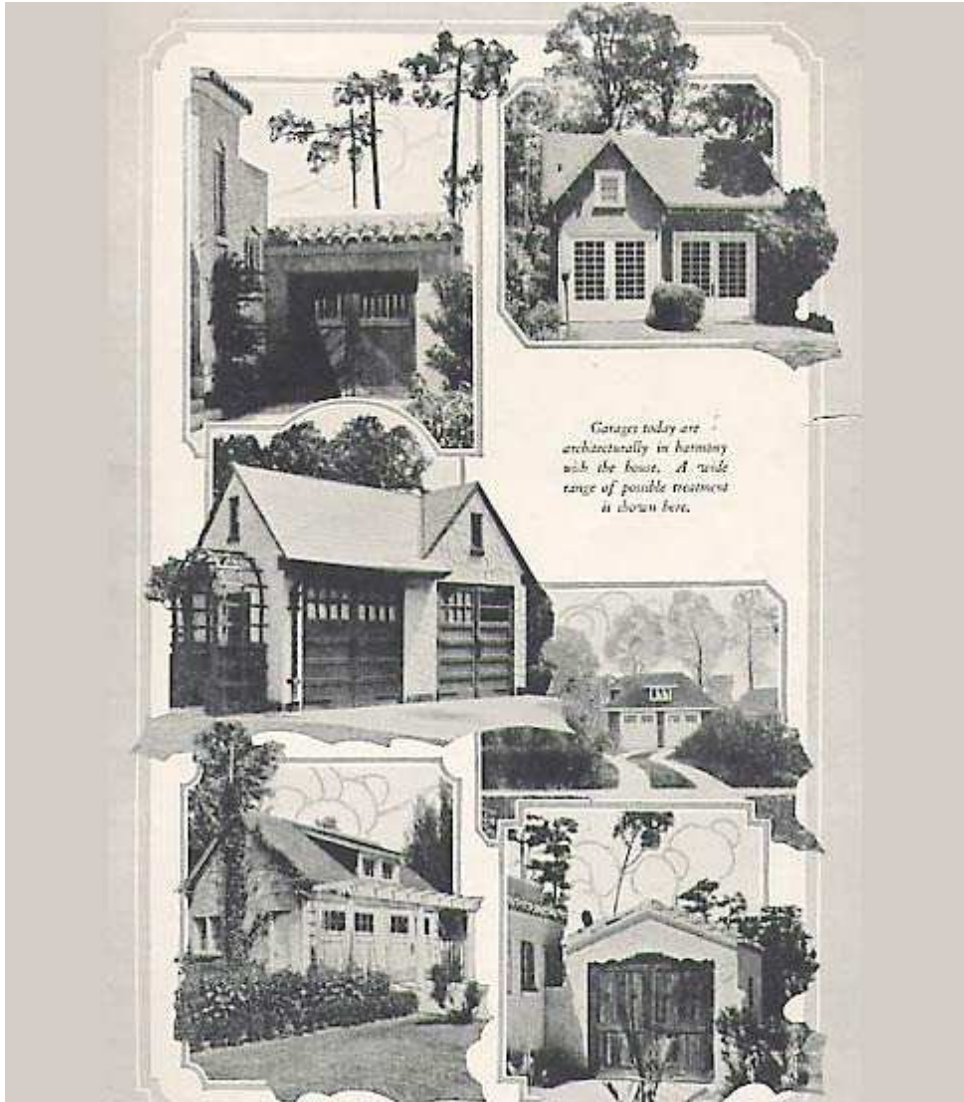


## Historic Garage Examples

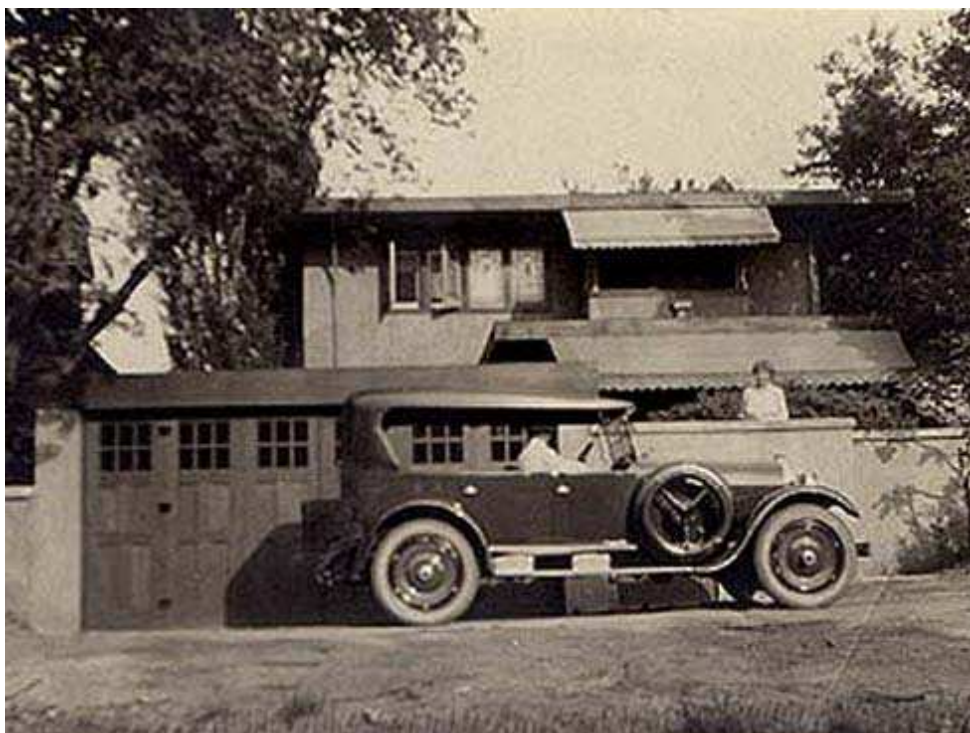
Get inspired by these bungalow garages

[Garages](#), [Inspiration](#)



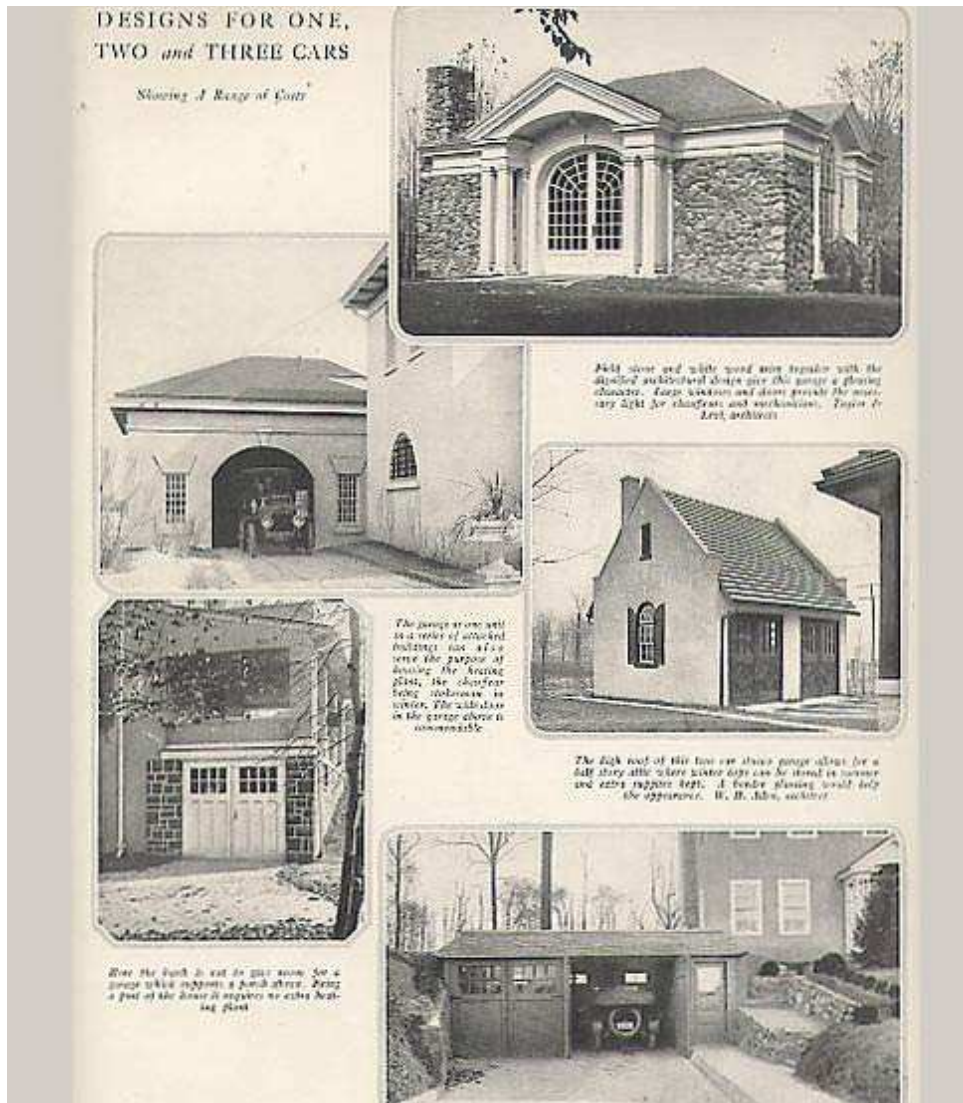
*Garages of the 1920's*

A project looming way in the future, but a project none the less, is our garage. The original owner of our house, John L. Welsh, built a private garage with a dirt floor and a paper roof in 1919. That building is no longer standing.



*Aren't the doors on this garage beautiful?*

A newer, larger garage was built a few years ago. The garage takes up most of the backyard. The [cement lawn](#) probably makes our garage appear even larger and uglier. Yards in Los Angeles tend to be small and filling in the backyard with cement is actually a fairly popular thing to do.



*Designs for one, two and three car garages.*

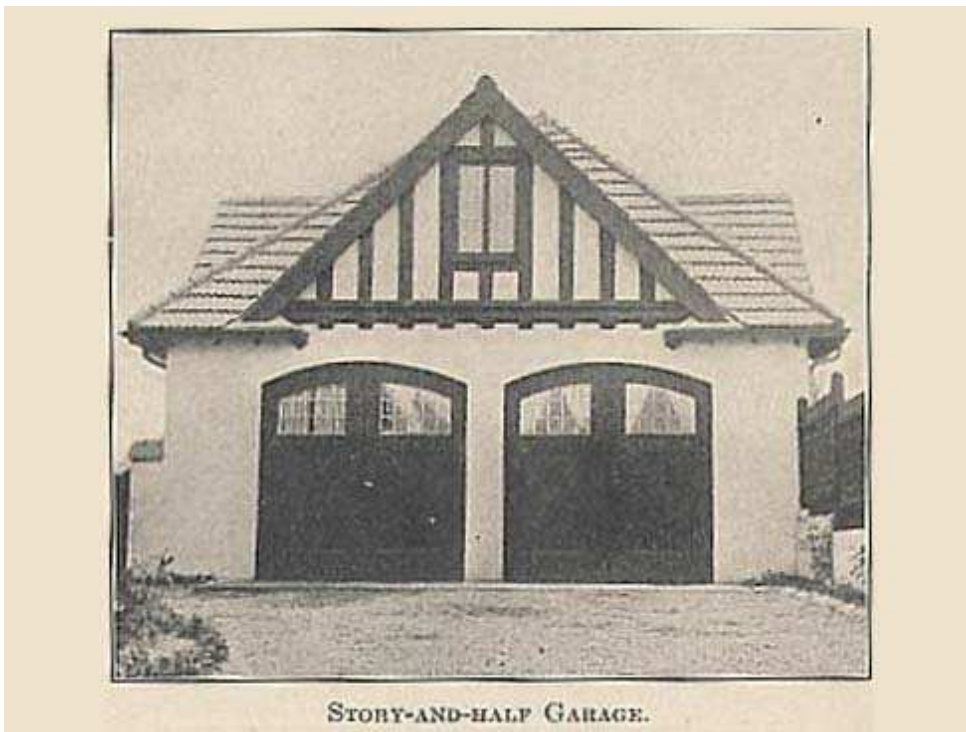
People often use the space for an outdoor patio. The previous owners of this house used the cement lawn to park their cars on. Growing up in the Midwest where green lawns covered acres and mowing took half a day, I find the cement lawns appallingly ugly.

I'll post some pictures of [our ugly garage](#) and [cement lawn](#) soon. In the mean time, enjoy these vintage garage photos and illustrations that we are using for inspiration.

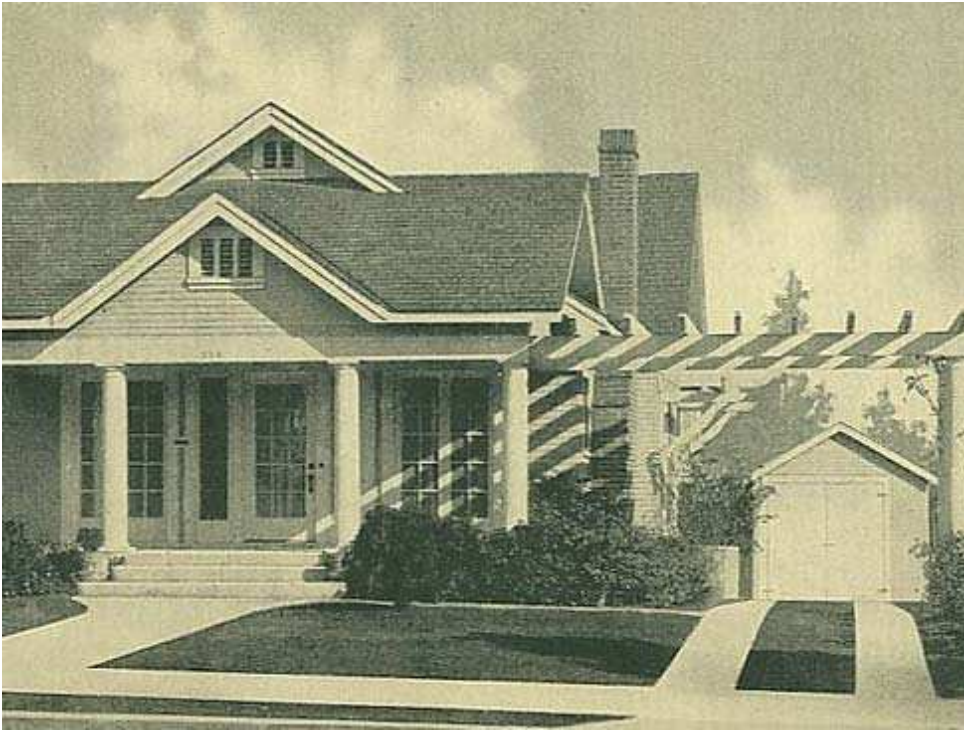




*This charming illustration is from an Aladdin catalog.*



*You can see the Tudor influences on this garage.*



*Many homes in our neighborhood were built with a pergola framing, or if vine covered, obscuring the view of the garage.*



*This image is from "The Second Book of Houses" and the caption states: Simple and yet architecturally pleasing is the garage on the place of G. C. Price, at Charleston, West Va., of which Dennison & Hirons were the architects.*



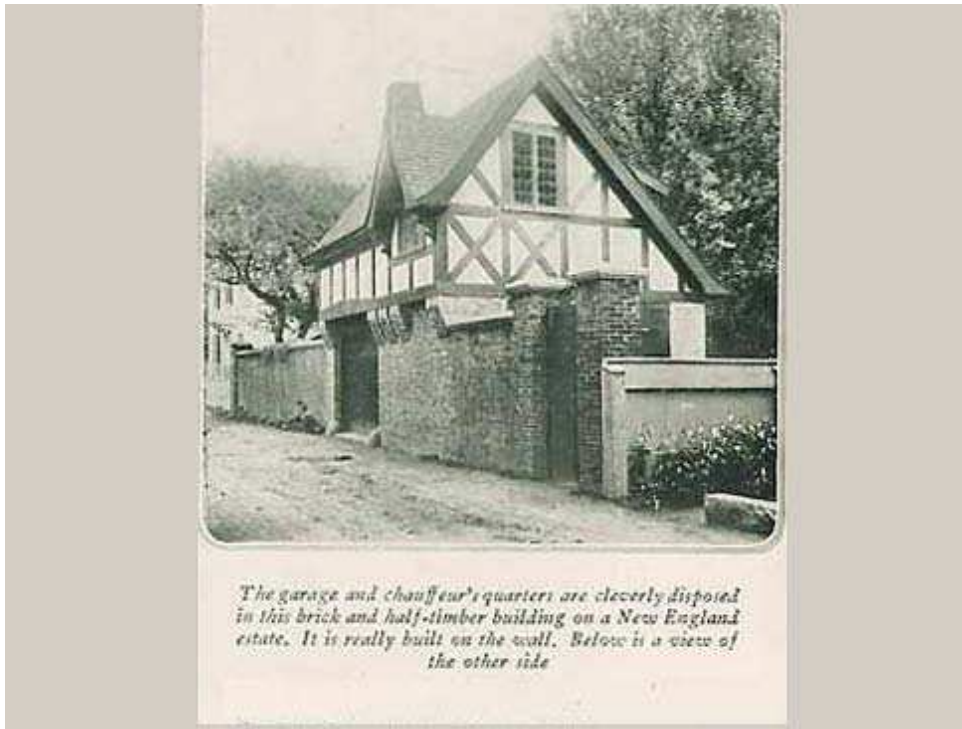
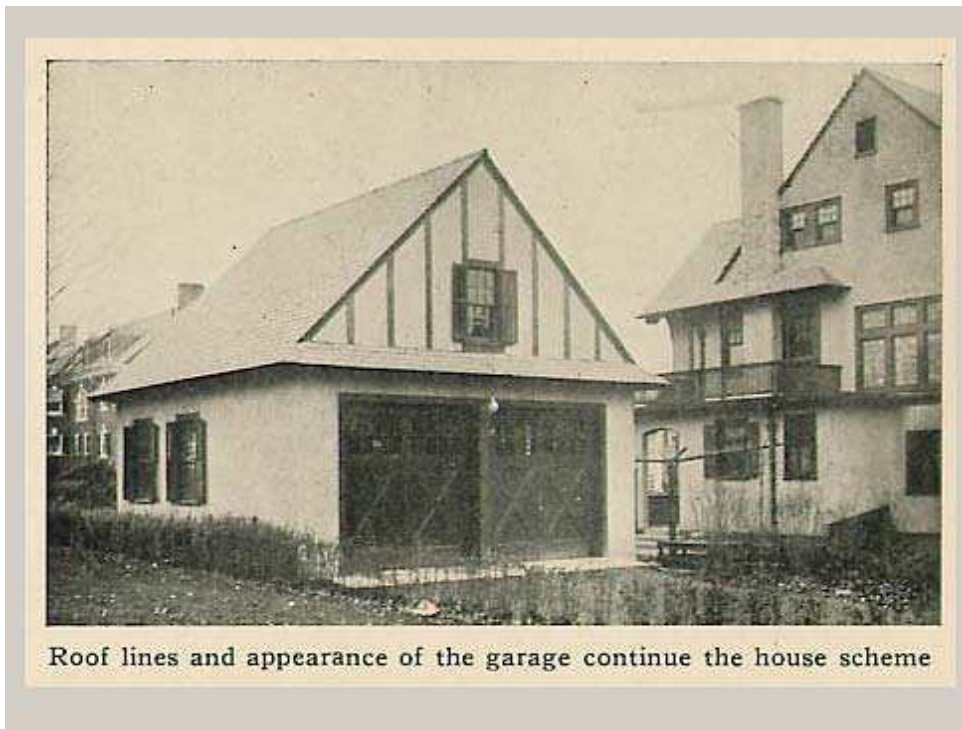


Image is also from "The Second Book of Houses"





A good fireproof brick and stucco type having a shop on one side. Plan on page 32

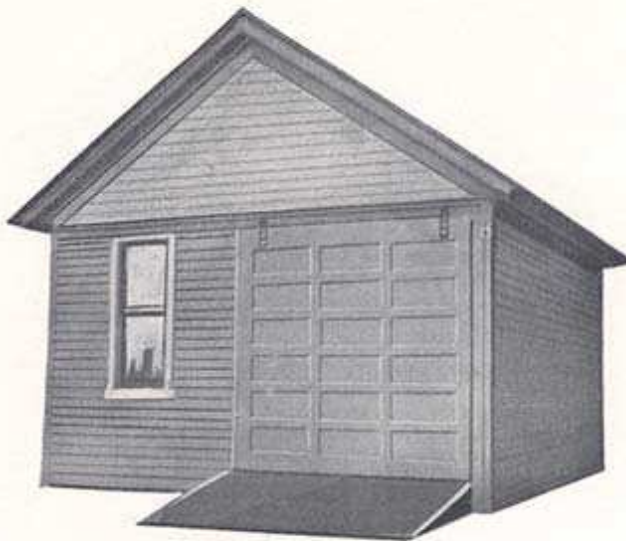


This frame and stucco style is designed to hold two automobiles. Plan on page 30



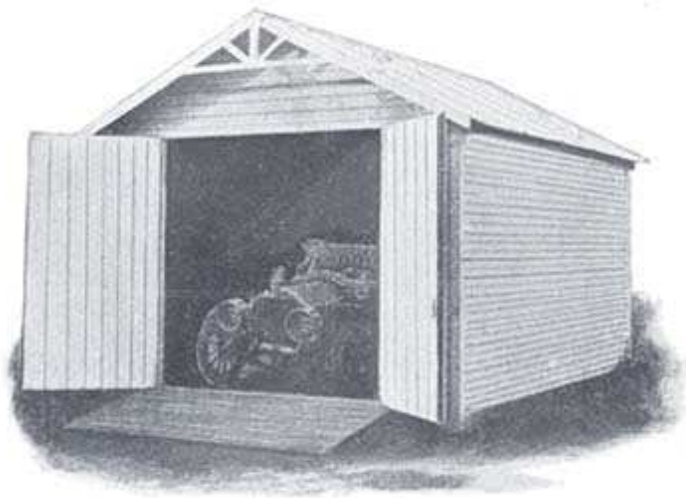
ALADDIN PREMIER AUTO HOUSE.

a guaranty backed by our large factory.



Aladdin Knocked-down Automobile Garages





No. 2 "ALADDIN" Automobile Garage—Size 12x20 ft. Designed for all sizes of touring cars. This is a roomy, light and airy house, with ample room for tools, accessories, etc. Our garages are much larger than anything in their class on the market AND much cheaper.



*Vintage garage that has survived to the present day.*

Share: [tweet](#) [facebook](#) [stumbleUpon](#) [email](#)

LocalGarageQuotes  
Compare Garage Project Costs  
[Compare Now](#)



Comments { 8 }